

2023 Consumer Confidence Report

Meriden Village Water District

EPA# 1921020

Introduction

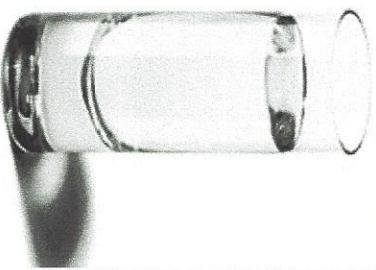
Like any responsible public water system, our mission is to deliver the best quality drinking water and reliable service at the lowest, appropriate cost. Aging infrastructure presents challenges to drinking water safety, and continuous improvement is needed to maintain the quality of life we desire for today and for the future.

Since 2004 the Meriden Village Water District has replaced over 4000 ft of water distribution main and developed two new water wells. These investments were funded through the State of New Hampshire Drinking Water Revolving Loan Fund. In 2021 the MVWD replaced 1700 feet of water main along Main St. The repayment of loans as well as the ongoing operation and maintenance costs are paid for with water user charges. When considering the high value we place on water, it is truly a bargain to have water service that protects public health, fights fires, supports businesses and the economy, and provides us with the high-quality of life we enjoy.

What is a Consumer Confidence Report?

The Consumer Confidence Report (CCR) details the quality of your drinking water, where it comes from, and where you can get more information. This annual report documents all detected primary and secondary drinking water parameters, and compares them to their respective standards

NOW IT COMES WITH A LIST OF INGREDIENTS.



known as Maximum Contaminant Levels (MCLs).

The sources of drinking water (both tap water and bottled water) include rivers, lakes, streams, ponds, reservoirs, springs, and wells. As water travels over the surface of the land or through the ground, it dissolves naturally-occurring minerals and, in some cases, radioactive material, and can pick up substances resulting from the presence of animals or from human activity.

Contaminants that may be present in source water include:

Microbial contaminants, such as viruses and bacteria, which may come from sewage treatment plants, septic systems, agricultural livestock operations, and wildlife.

Inorganic contaminants, such as salts and metals, which can be naturally occurring or result from urban storm water runoff, industrial or domestic wastewater discharges, oil and gas production, mining or farming.

Pesticides and herbicides, which may come from a variety of sources such as agriculture, urban storm water runoff, and residential uses.

Organic chemical contaminants, including synthetic and volatile organic chemicals, which are by-products of industrial processes and petroleum production, and can also come from gas stations, urban storm water runoff, and septic systems.

Radioactive contaminants, which can be naturally-occurring or be the result of oil and gas production and mining activities.

In order to ensure that tap water is safe to drink, EPA prescribes regulations which limit the amount of certain contaminants in water provided by public water systems. The US Food and Drug Administration (FDA) regulations establish limits for contaminants in bottled water which must provide the same protection for public health.

What is the source of my drinking water?

Meriden Village Water District drinking water comes from three gravel pack wells located on land owned by the Plainfield School District. Water is disinfected

with Sodium Hypochlorite to kill any potential bacteria and the pH is adjusted with Sodium Hydroxide to make the water less corrosive. A 225,000 gallon water storage tank located on Chellis Rd. supplies system pressure.

Why are contaminants in my water? Drinking water, including bottled water, may reasonably be expected to contain at least small amounts of some contaminants. The presence of contaminants does not necessarily indicate that water poses a health risk. More information about contaminants and potential health effects can be obtained by calling the Environmental Protection Agency's Safe Drinking Water Hotline at 1-800-426-4791.

Do I need to take special precautions? Some people may be more vulnerable to contaminants in drinking water than the general population. Immunocompromised persons such as persons with cancer undergoing chemotherapy, persons who have undergone organ transplants, people with HIV/AIDS or other immune system disorders, some elderly, and infants can be particularly at risk from infections. These people should seek advice about drinking water from their health care providers. EPA/CDC guidelines on appropriate means to lessen the risk of infection by *Cryptosporidium* and other microbial contaminants are available from the Safe Drinking Water Hotline at 1-800-426-4791.

Source Water Assessment Summary

DES prepared drinking water source assessment reports for all public water systems between 2000 and 2003 in an effort to assess the vulnerability of each of the state's public water supply sources. Included in the report is a map of each source water protection area, a list of potential and known contamination sources, and a summary of available protection options. The results of the assessment, prepared in 2001, are noted below.

The assessment identified 4 susceptibility factors to be low, 3 considered to be medium, and 5 considered high.

Note: This information is over 20 years old and includes information that was current at the time the report was completed. Therefore, some of the ratings might be different if updated to reflect current

information. At the present time, DES has no plans to update this data.

The complete Assessment Report is available for review at the Meriden Village Water District Wastewater Treatment Facility, 90 Bonner Rd. For more information call Bill Taylor 469-3486 or visit the DES Drinking Water Source Assessment website at <http://des.nh.gov/organization/divisions/water/dwgb/dwssp/dwsap.htm>.

How can I get involved?

The Meriden Village Water District is managed by a three person Board of Commissioners. The 2023 Commissioners are: Bud Hill 603-359-2047, Derek Gueldenzoph 469-2171, and Greg Castell 519-0032. The Commissioners meet on the second Thursday of each month at the Meriden Fire Station. Meetings begin at 7:00pm. The certified water system operator is Bill Taylor 469-3486.

Definitions

Action Level or AL: The concentration of a contaminant which, if exceeded, triggers treatment or other requirements which a water system must follow.

Maximum Contaminant Level or MCL: The highest level of a contaminant that is allowed in drinking water. MCLs are set as close to the MCLGs as feasible using the best available treatment technology.

Maximum Contaminant Level Goal or MCLG: The level of a contaminant in drinking water below which there is no known or expected risk to health. MCLGs allow for a margin of safety.

Maximum Residual Disinfectant Level or MRDL: The highest level of a disinfectant allowed in drinking water. There is convincing evidence that addition of a disinfectant is necessary for control of microbial contaminants.

Maximum Residual Disinfectant Level Goal or MRDLG: The level of a drinking water disinfectant below which there is no known or expected risk to health. MRDLGs do not reflect the benefits of the use of disinfectants to control microbial contaminants.

Treatment Technique or TT: A required process intended to reduce the level of a contaminant in drinking water.

Turbidity: A measure of the cloudiness of the water. It is monitored by surface water systems because it is a good indicator of water quality and thus helps measure the effectiveness of the treatment process. High turbidity can hinder the effectiveness of disinfectants.

Abbreviations

BDL: Below Detection Limit
mg/L: milligrams per Liter
NA: Not Applicable
ND: Not Detectable at testing limits
NTU: Nephelometric Turbidity Unit
pCi/L: picoCurie per Liter
ppb: parts per billion
ppm: parts per million
RAA: Running Annual Average
TTHM: Total Trihalomethanes
UCMR: Unregulated Contaminant Monitoring Rule
ug/L: micrograms per Liter

THE FOLLOWING APPLIES if these contaminants are present - see table for detected levels.

Drinking Water Contaminants:

Lead: If present, elevated levels of lead can cause serious health problems, especially for pregnant women and young children. Lead in drinking water is primarily from materials and components associated with service lines and home plumbing. This water system is responsible for high quality drinking water, but can not control the variety of materials used in your plumbing components. When your water has been sitting for several hours, you can minimize the potential for lead exposure by flushing cold water from your tap for at least 30 seconds before using water for drinking or cooking. Do not use hot water for drinking and cooking. If you are concerned about lead in your water, you may wish to have your water tested. Information on lead in drinking water, testing methods, and steps you can

take to minimize exposure is available from the Safe Drinking Water Hotline or at <http://water.epa.gov/drink/info/lead/index.cfm>

Radon: Radon is a radioactive gas that you can't see, taste or smell. It can move up through the ground and into a home through cracks and holes in the foundation. Radon can also get into indoor air when released from tap water from showering, washing dishes, and other household activities. It is a known human carcinogen. Breathing radon can lead to lung cancer. Drinking water containing radon may cause an increased risk of stomach cancer.

2023 Report (2022 Data)

LEAD AND COPPER

Contaminant (Units)	Action Level (AL)	90 th percentile sample value *	Date	# of sites above AL	Violation Yes/No	Likely Source of Contamination	Health Effects of Contaminant
Copper (ppm)	1.3	0.039	11/2/21			Corrosion of household plumbing systems; erosion of natural deposits; leaching from wood preservatives	Copper is an essential nutrient, but some people who drink water containing copper in excess of the action level over a relatively short amount of time could experience gastrointestinal distress. Some people who drink water containing copper in excess of the action level over many years could suffer liver or kidney damage. People with Wilson's Disease should consult their personal doctor.
Lead (ppb)	15	0	11/2/21			Corrosion of household plumbing systems, erosion of natural deposits	(15 ppb in more than 5%) Infants and young children are typically more vulnerable to lead in drinking water than the general population. It is possible that lead levels at your home may be higher than at other homes in the community as a result of materials used in your home's plumbing. If you are concerned about elevated lead levels in your home's water, you may wish to have your water tested and flush your tap for 30 seconds to 2 minutes before using tap water. Additional information is available from the Safe Drinking Water Hotline (800-426-4791). (Above 15 ppb) Infants and children who drink water containing lead in excess of the action level could experience delays in their physical or mental development. Children could show slight deficits in attention span and learning abilities. Adults who drink this water over many years could develop kidney problems or high blood pressure.

DETECTED WATER QUALITY RESULTS

Radioactive Contaminants

Contaminant (Units)	Level Detected*	Date	MCL	MCLG	Violation YES/NO	Likely Source of Contamination	Health Effects of Contaminant
Compliance Gross Alpha (pCi/l)	1.0	2017	15	0	No	Erosion of natural deposits	Certain minerals are radioactive and may emit a form of radiation known as alpha radiation. Some people who drink water containing alpha emitters in excess of the MCL over many years may have an increased risk of getting cancer.
Combined Radium 226 + 228 (pCi/l)	0.343	2017	5	0	No	Erosion of natural deposits	Some people who drink water containing radium 226 or 228 in excess of the MCL over many years may have an increased risk of getting cancer.

Inorganic Contaminants

Contaminant (Units)	Level Detected*	Date	MCL	MCLG	Violation YES/NO	Likely Source of Contamination	Health Effects of Contaminant
Nitrate (as Nitrogen) (ppm)	0.24	8/9/2022	10	10	No	Runoff from fertilizer use; leaching from septic tanks, sewage; erosion of natural deposits	(5 ppm through 10ppm) Nitrate in drinking water at levels above 10 ppm is a health risk for infants of less than six months of age. High nitrate levels in drinking water can cause blue baby syndrome. Nitrate levels may rise quickly for short periods of time because of rainfall or agricultural activity. If you are caring for an infant, you should ask for advice from your health care provider. (Above 10 ppm) Infants below the age of six months who drink water containing nitrate in excess of the MCL could become seriously ill and, if untreated, may die. Symptoms include shortness of breath and blue baby syndrome.
Contaminant (Units)	Level Detected*	Date	MCL	MCLG	Violation YES/NO	Likely Source of Contamination	Health Effects of Contaminant
Total Trihalomethanes (TTHM) (Bromodichloromethane Bromoform Dibromochloromethane Chloroform) (ppb)	5.2	8/9/22	80	N/A	No	By-product of drinking water chlorination	Some people who drink water containing trihalomethanes in excess of the MCL over many years may experience problems with their liver, kidneys, or central nervous systems, and may have an increased risk of getting cancer.

*

SECONDARY CONTAMINANTS

Secondary MCLs (SMCL)	Level Detected	Date	Treatment technique (if any)	SMCL	50 % AGQS (Ambient groundwater quality standard)	AGQS (Ambient groundwater quality standard)	Specific contaminant criteria and reason for monitoring
Chloride (ppm)	14	8/19/21	N/A	250	N/A	N/A	Wastewater, road salt, water softeners, corrosion
Iron (ppm)	0.034	8/19/21	N/A	0.3	N/A	N/A	Geological
PH (ppm)	6.5	8/19/21	N/A	6.5-8.5	N/A	N/A	Precipitation and geology
Sodium (ppm)	8.7	8/19/22	N/A	100-250	N/A	N/A	We are required to regularly sample for sodium